

Afternoon Tea
at The Merchant Hotel

2006

20

2026

Anniversary Edition

Afternoon Tea at The Merchant Hotel

We are proud to be celebrating two decades of Afternoon Tea in The Great Room Restaurant. Inspired by some of our favourite menus from the last 20 years, Head Pastry Chef Sarah Jade Jamison revisits these timeless classics, reimagining them through a lens of modernity and opulence

Drawing on over twenty years of creativity and craftsmanship, Sarah Jade and our patisserie team continue to push boundaries while honouring tradition. Her work is shaped by longstanding collaborations, including her role as an esteemed Circle V member with French premium chocolatier Valrhona, alongside her travels and connections across the UK and France. The result is a patisserie experience that feels both rooted in heritage and elevated to a global stage.

Over the years, our Merchant Afternoon Tea stand has reflected a passion for exceptional ingredients and pioneering techniques. The Great Room was among the first in Belfast to introduce distinctive flavours - from the vibrant citrus notes of yuzu and calamansi to the delicate aromatics of tonka bean and gorse flower. Our signature macarons remain at the forefront of innovation, complemented by our dedication to crafting chocolate in-house using Brazilian cocoa and exclusive pre-release Valrhona grand cru collections.

Served with an elegant selection of finger sandwiches, warm, freshly baked scones with clotted cream and preserves, and a curated range of the finest teas, this Anniversary Edition is a true celebration of our iconic Merchant Afternoon Tea. We didn't invent it, we perfected it.



Merchant Afternoon Tea

The Merchant Hotel's Afternoon Tea served with finger sandwiches, scones, a delicious selection of seasonal patisseries and sweet treats and your choice of tea or coffee.

MONDAY - SUNDAY

46.50

Prosecco Afternoon Tea

Enjoy our Merchant Afternoon Tea accompanied by your choice of the following:

- One glass of Valdo Origine Prosecco
- A 250ml bottle of 'Merchant Darjeeling Rose Bellini' non-alcoholic sparkling tea infusion
- A 200ml bottle of non-alcoholic sparkling wine

MONDAY - SUNDAY

53.50

Cocktail Afternoon Tea

Enjoy our Merchant Afternoon Tea accompanied by one of our expertly crafted Afternoon Tea cocktails. Please ask your server for seasonal options.

MONDAY - SUNDAY

56.50

Champagne Afternoon Tea

Enjoy our Merchant Afternoon Tea accompanied by one glass of Taittinger Brut Réserve or Forget-Brimont Premier Cru Brut Rosé NV.

MONDAY - SUNDAY

59.50

Please advise your server of any food allergies. We cannot guarantee that our dishes will be completely allergen free. A discretionary service charge of 10% will be added to your bill.

Passion fruit and mango tart

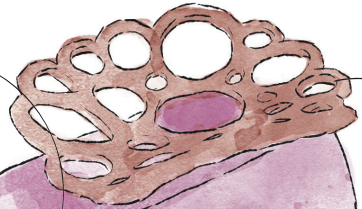


Blueberry and lemon cheesecake



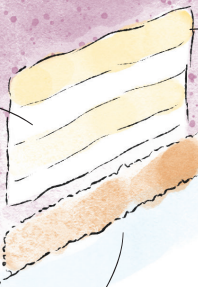
Valrhona strawberry, chocolate, yuzu and elderflower curd

Blueberry cheesecake



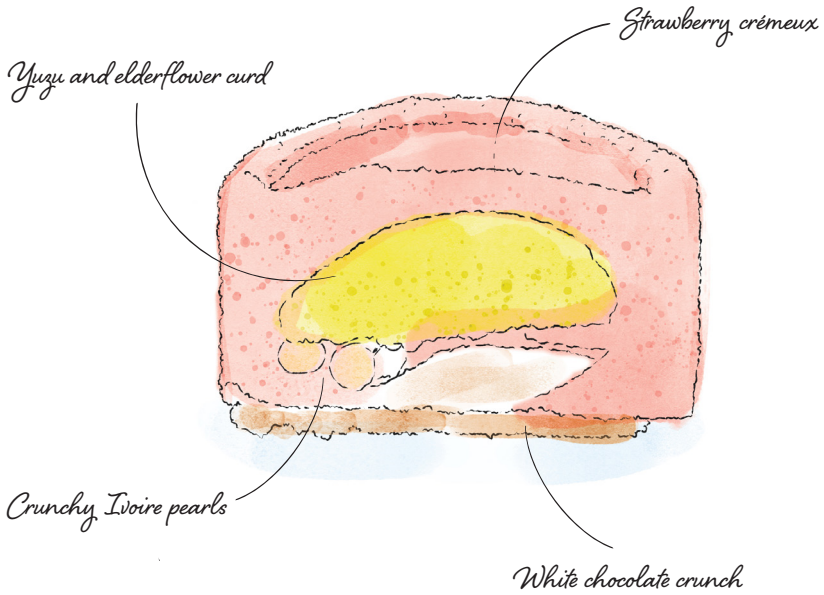
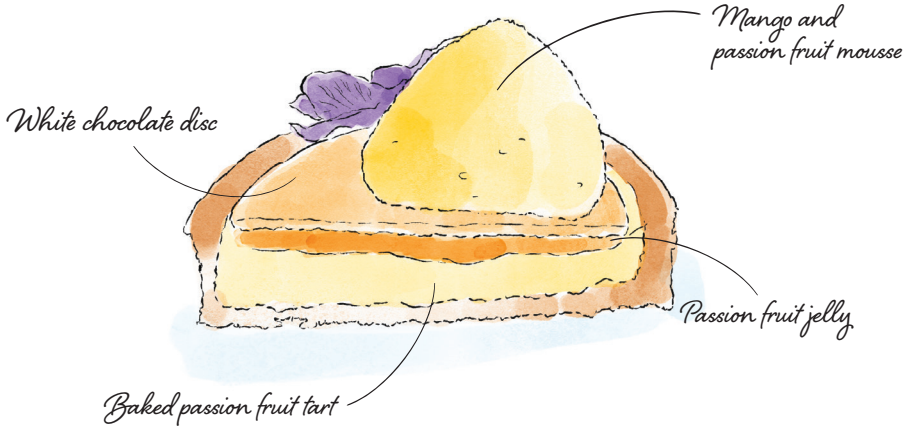
Tuile biscuit

Lemon cheesecake



Lemon curd

Digestive base



Merchant

Afternoon Tea

SANDWICHES

Grilled chicken, fig chutney, rocket salad

Beef pastrami, chimichurri, cos lettuce

Ham, grape mustard, cheddar cheese

Ewing's smoked salmon, dill cream cheese, fennel remoulade

Free-range egg and Hegarty's cheddar

BAKERY

Sweet macaron - Valrhona Raspberry and rose

Savoury macaron - Nasturtium, goat's cheese, black pepper

Freshly baked plain and fruit scones

Devonshire clotted cream, strawberry preserve

PÂTISSERIE

Valrhona strawberry chocolate, yuzu, and elderflower crèmeux

Blueberry and lemon cheesecake

Passion fruit and mango tart

Tea Selection

An elegant tea should be at the heart of your Afternoon Tea experience. From our ever-changing seasonal highlights to our brisk and refreshing Merchant Blend, you will find teas to suit all tastes in our extensive selection.

SEASONAL HIGHLIGHTS

Pineapple Peach ^{NEW}

Taste: Fruity, delicate, citrus.

Sun-ripened peach meets golden pineapple in this vibrant blend. Naturally sweet and tropical.

Mint Choc Chai ^{NEW}

Taste: Chocolate, sweet mint, spice.

A decadent blend of spicy chai, chocolate and fresh mint. Smooth and creamy, an indulgent treat for the senses.

Green Lemon Tea ^{NEW}

Taste: Sweet, lemon, zesty.

Lemon brightens the subtle notes of green tea. A sunny brew with citrus aromas and fresh lemon peel.

Merchant Tea Caddy

15.00

Enjoy our Signature Blend Merchant Tea from the comfort of your home or give the gift of exquisite tea to someone special with a Merchant Tea Caddy.

Please ask your server for more details.

BLACK TEAS

Fairtrade Signature Blend

Taste: Full-flavoured, brisk, punchy.

An East African, whole leaf classic all day blend.

Earl Grey Blue Flower

Taste: Rounded, delicate, citrus.

Sicilian bergamot gently blended with black tea and stunning blue cornflowers.

Darjeeling Second Flush

Taste: Sweet, floral, honeyed.

A Himalayan second flush grade FTGFOP1 - the Champagne of Indian tea.

GREEN TEAS

Organic Green Tea Sencha

Taste: Light, sweet, fresh.

A needle-like leaf which is steamed to keep the freshness in.

Green Tea Ginseng

Taste: Refreshing, ginger-warmth, sweet.

The energising properties of ginseng blended with green tea's revitalising taste and a hint of pineapple to sweeten things up.

BOTANICAL AND HERBAL TEAS

Apple Loves Mint

Taste: Sweet, papaya, minty.

Apple to start followed by papaya sweetness, a hint of rose and refreshing minty finish.

Organic Whole Peppermint

Taste: Tingling, fresh, aromatic.

Whole peppermint for a purifying and awakening cup.

Bramble

Taste: Blackberry, lemon, tartness.

A full-flavoured, fruity tea inspired by the classic Bramble cocktail.

Coffee Selection

Pot of Filter Coffee

Americano

Espresso

